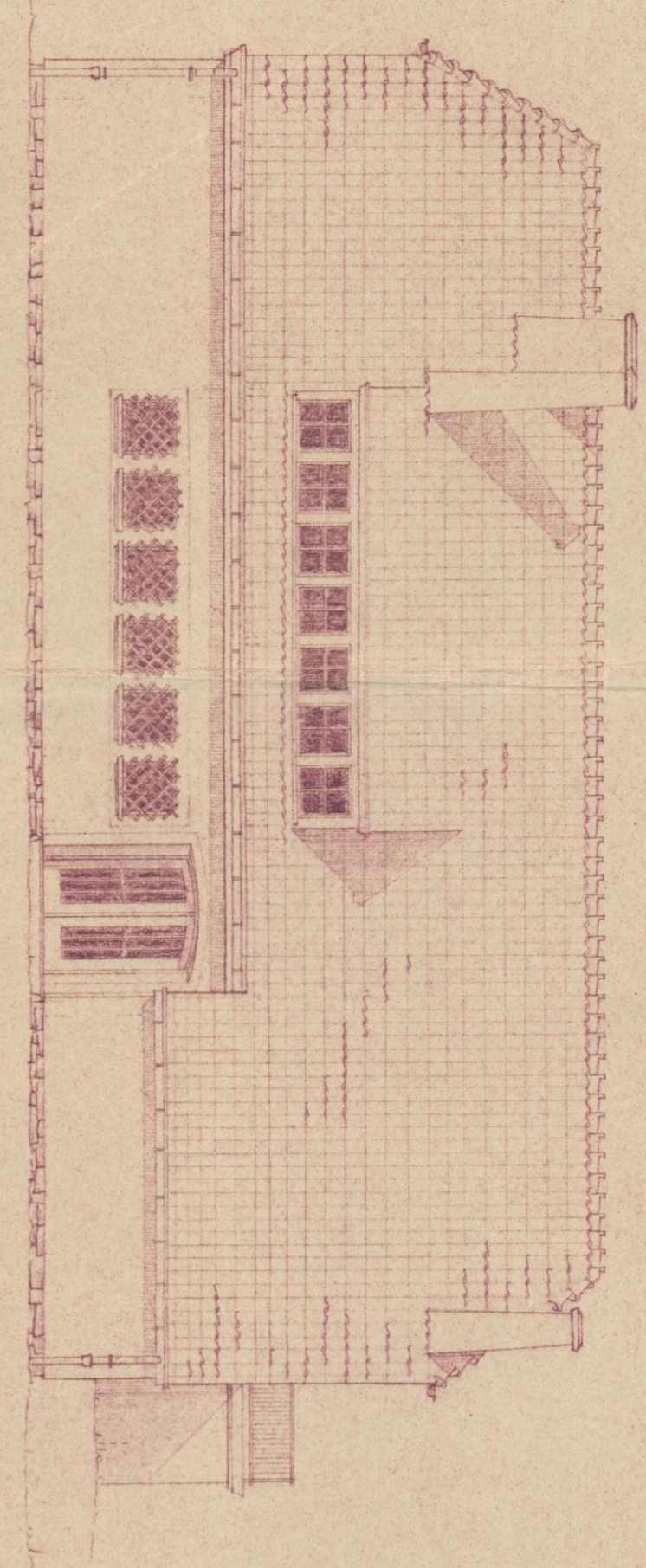
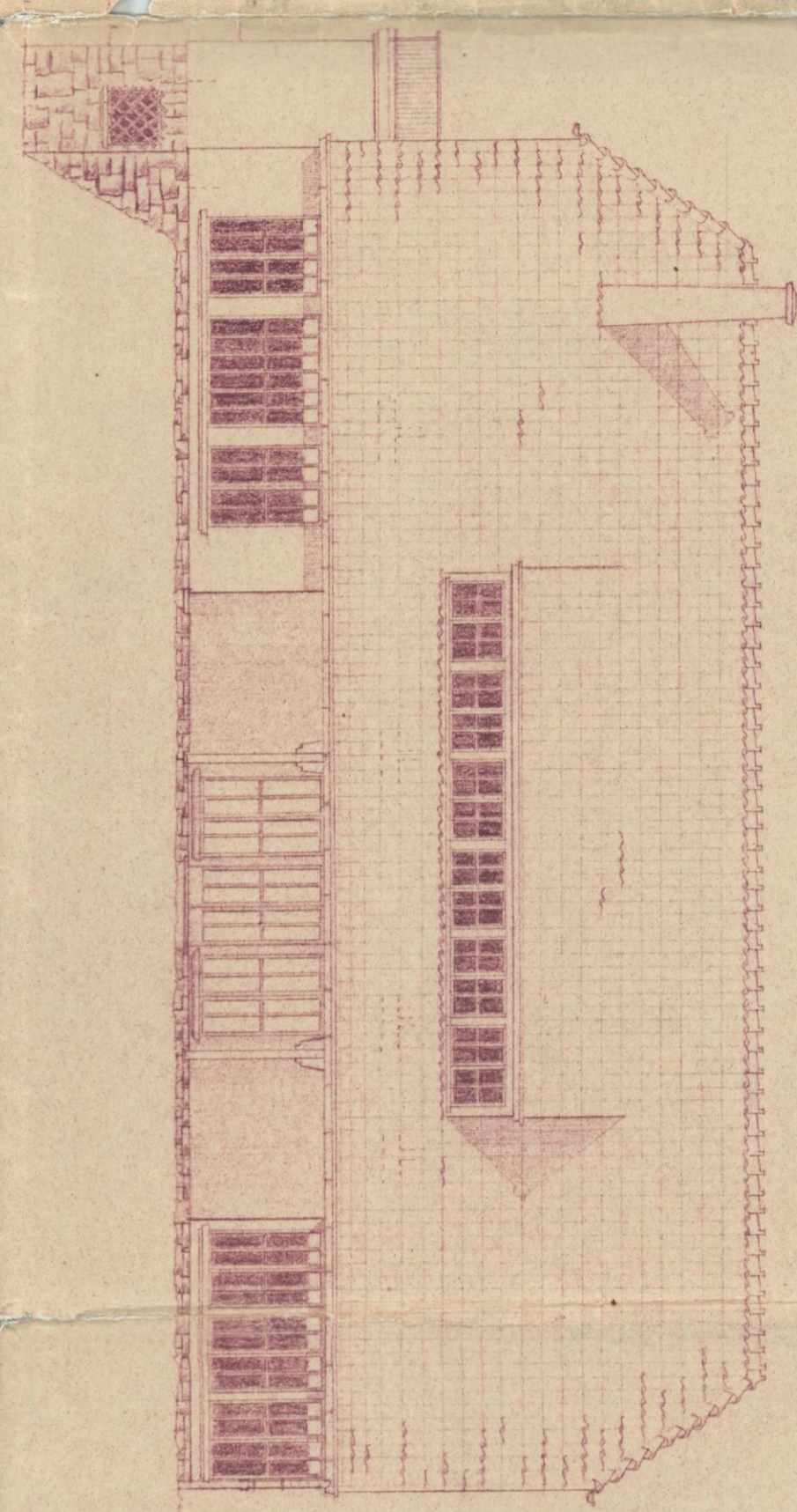


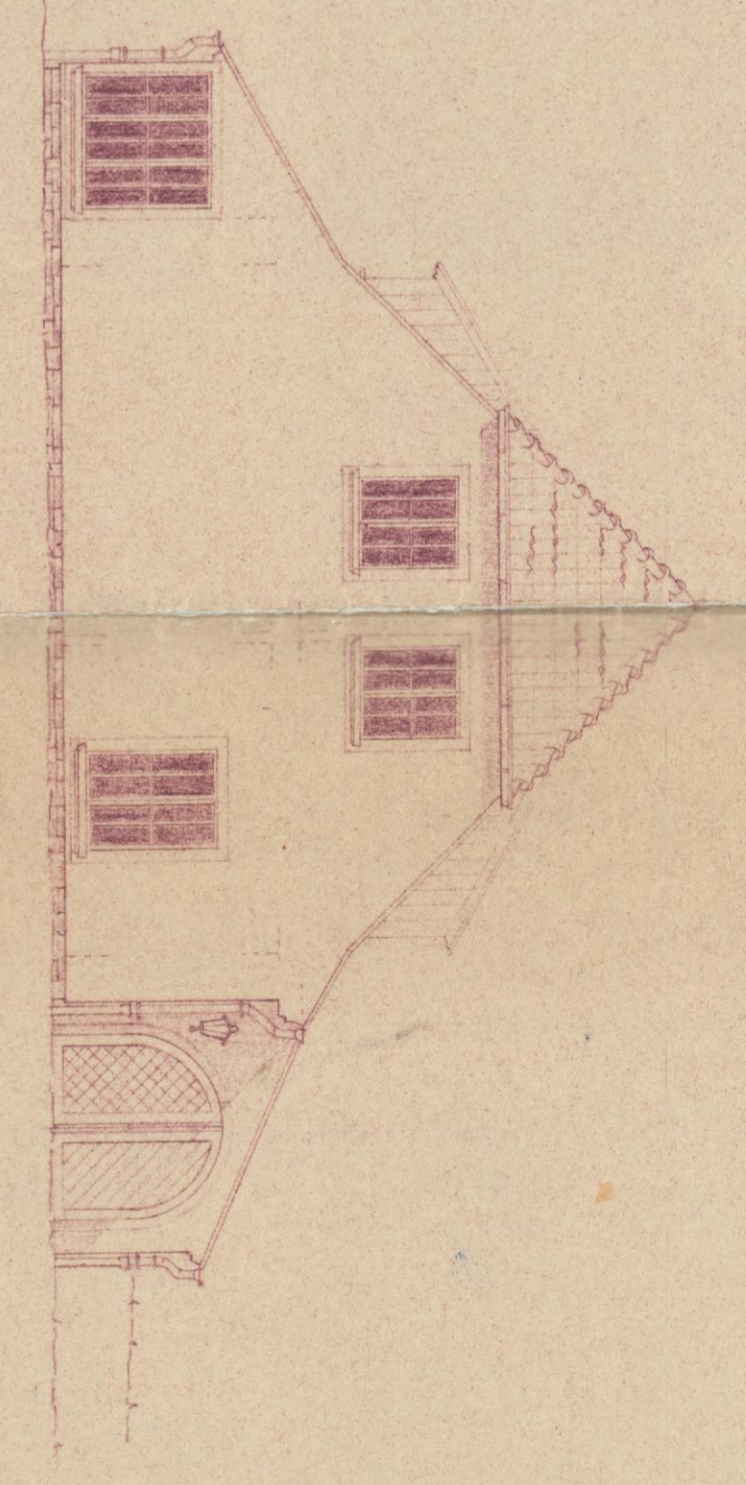
WOHNHAUS FÜR FRÄULEIN CHARLOTTE VOHMANN IN RIPPOLINGEN AM OBERRHEIN IM MASSTABE 1 : 100 UND 1 : 1000



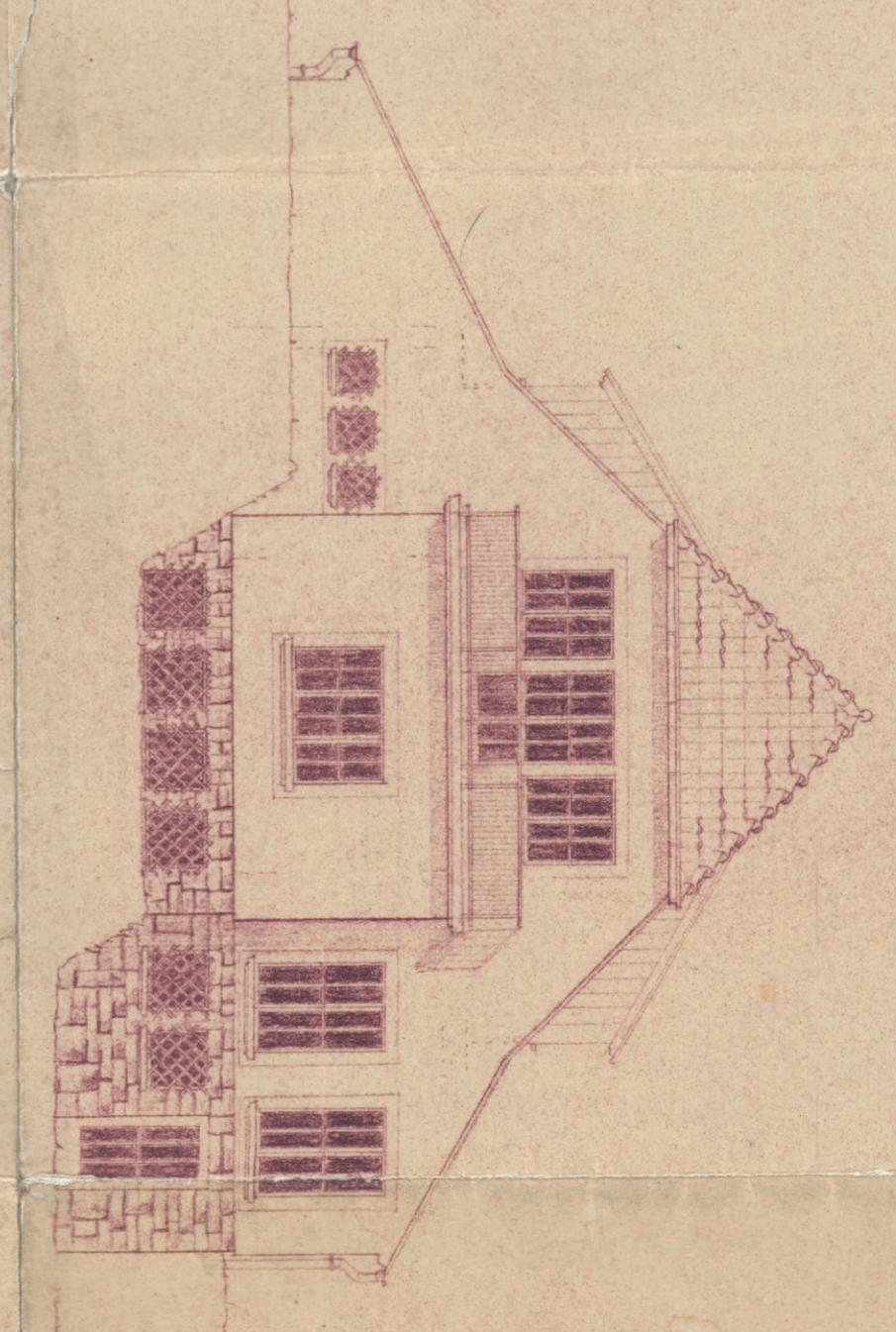
NORDANSICHT



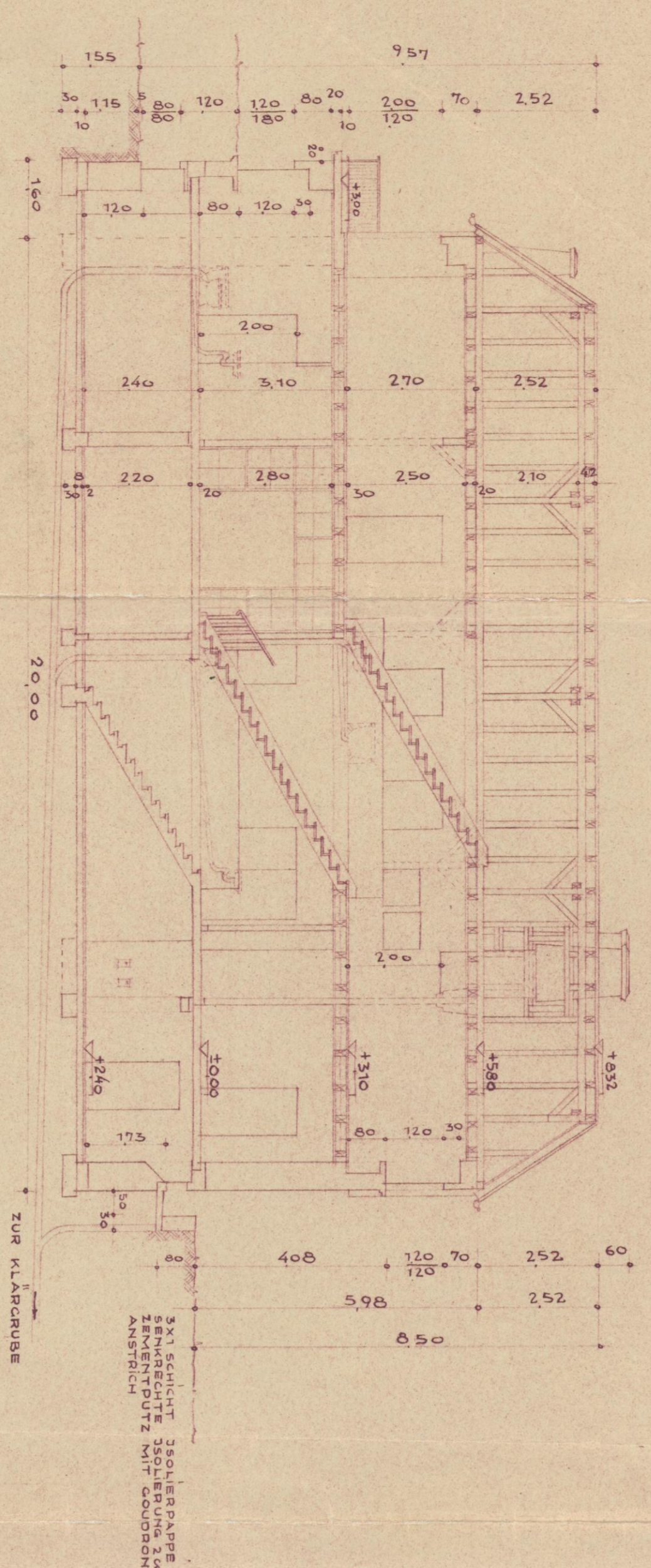
SÜDANSICHT



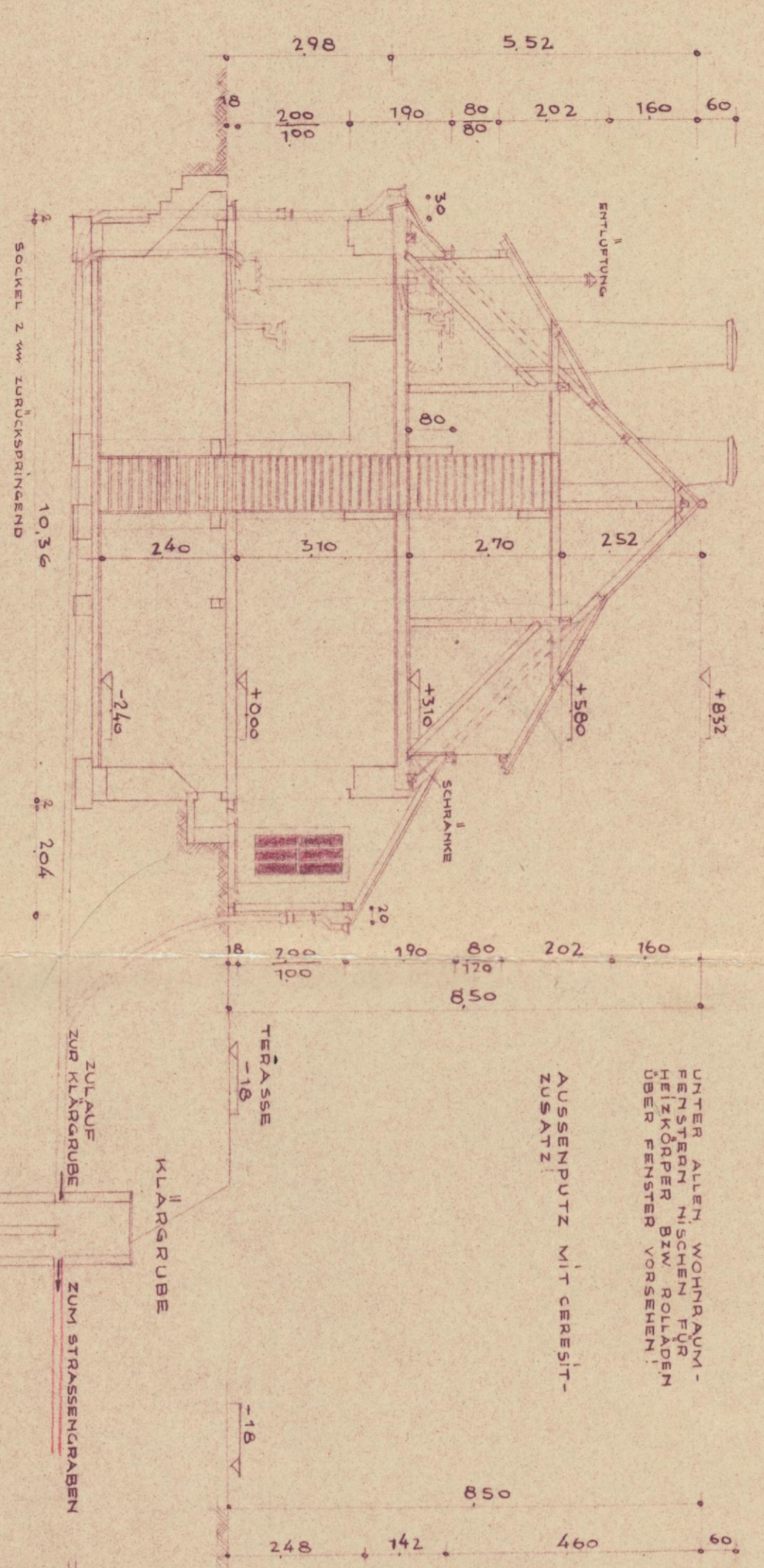
OSTANSICHT



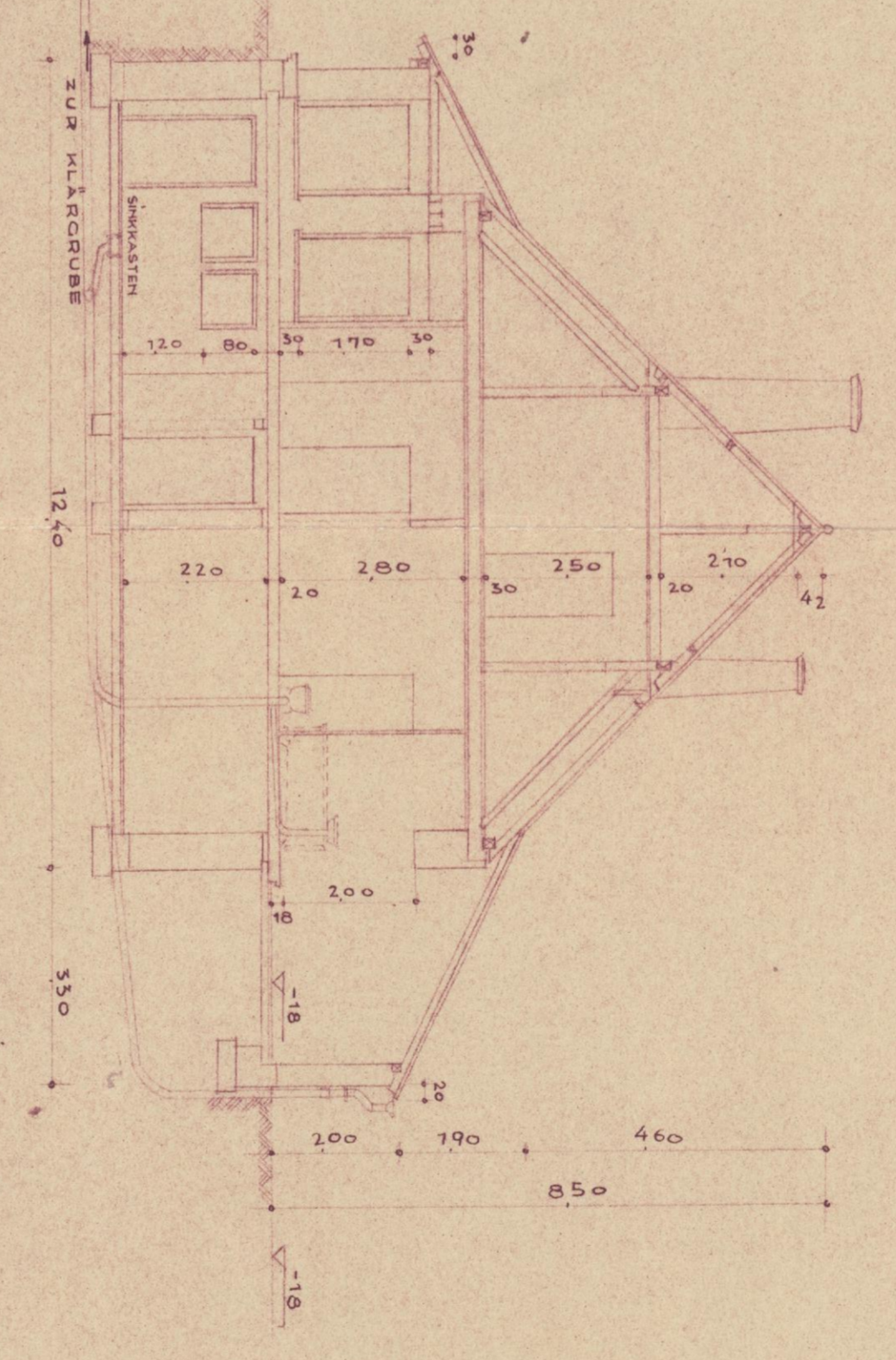
WESTANSICHT



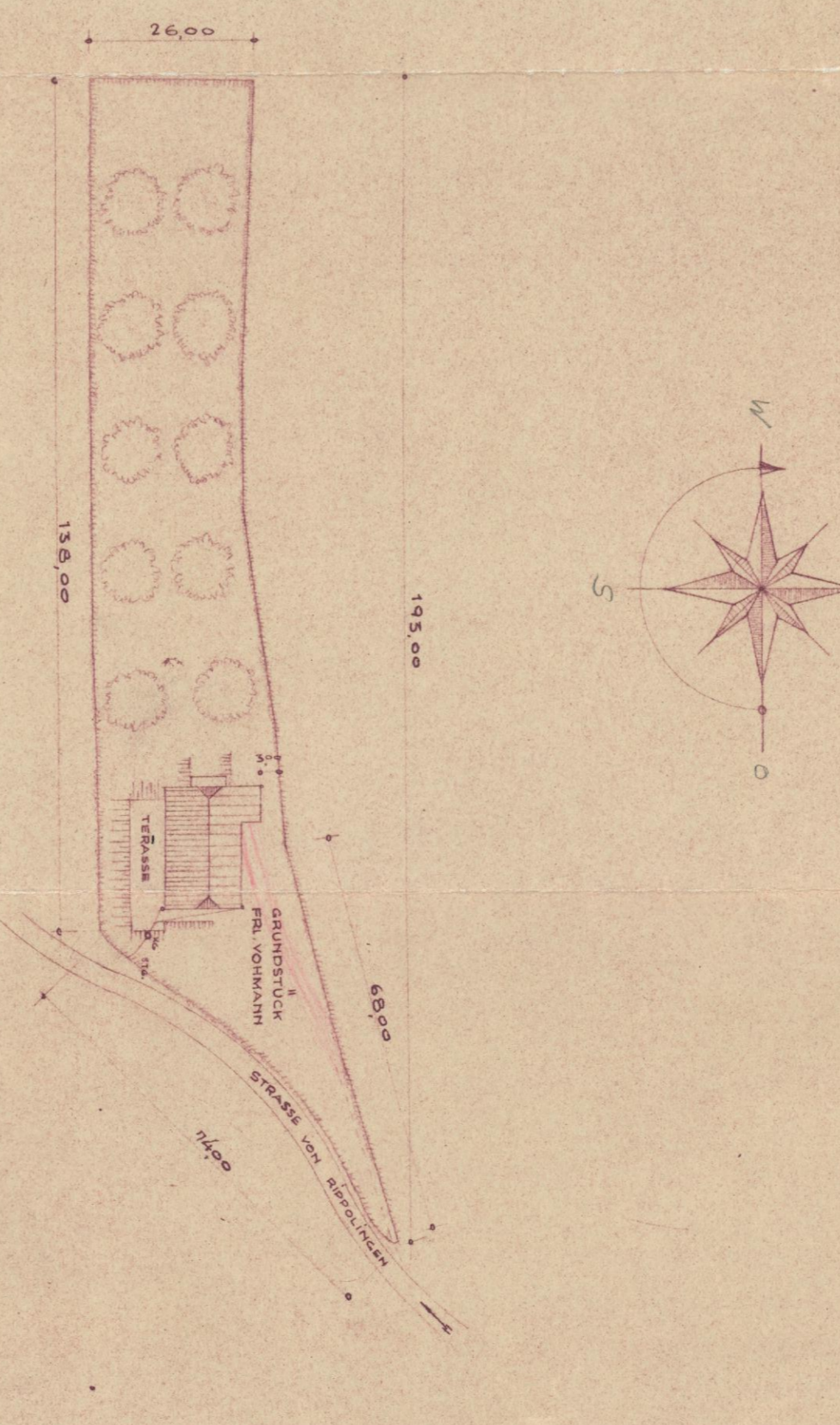
LÄNGSSCHNITT A-A



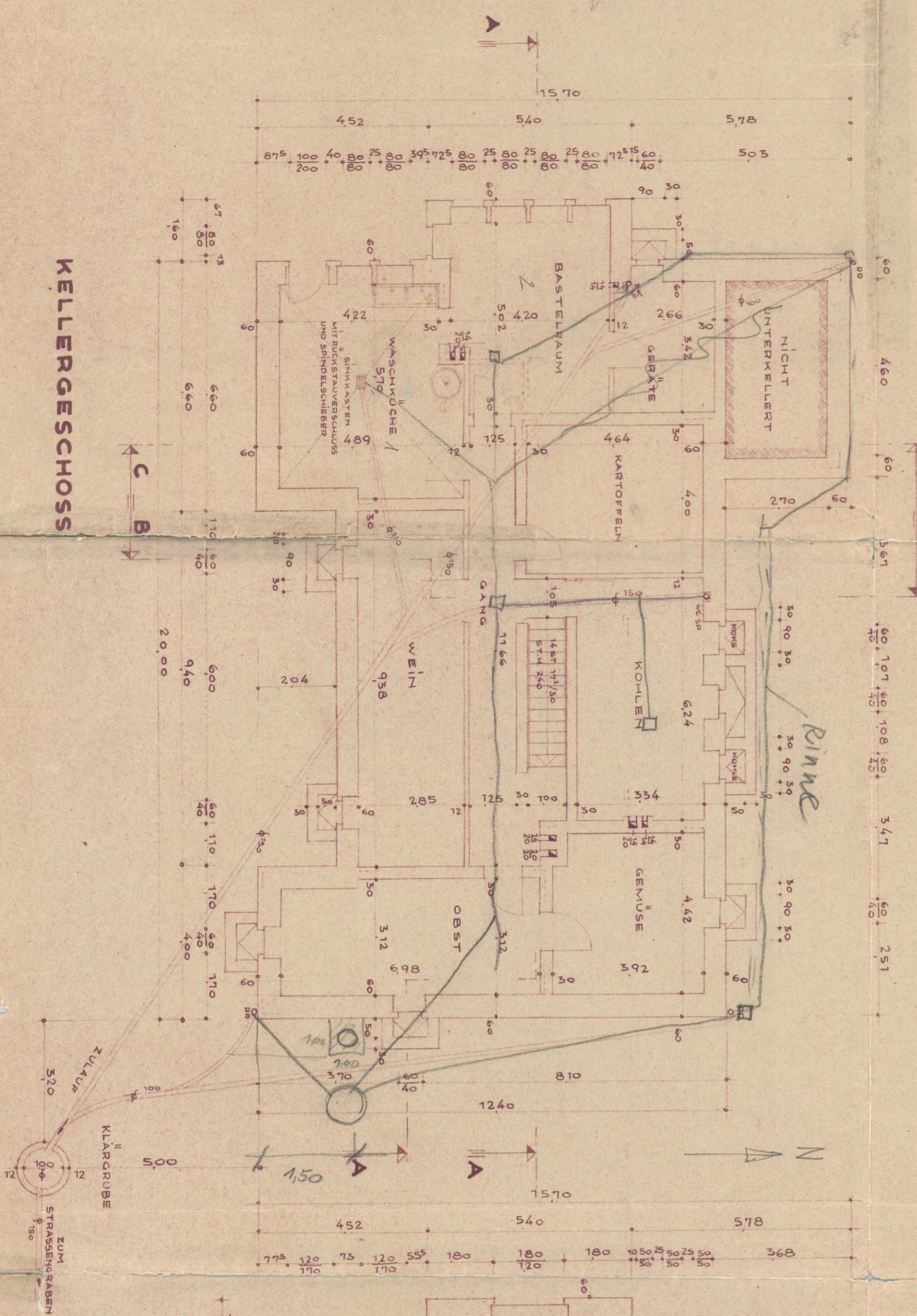
QUERSCHNITT B-B



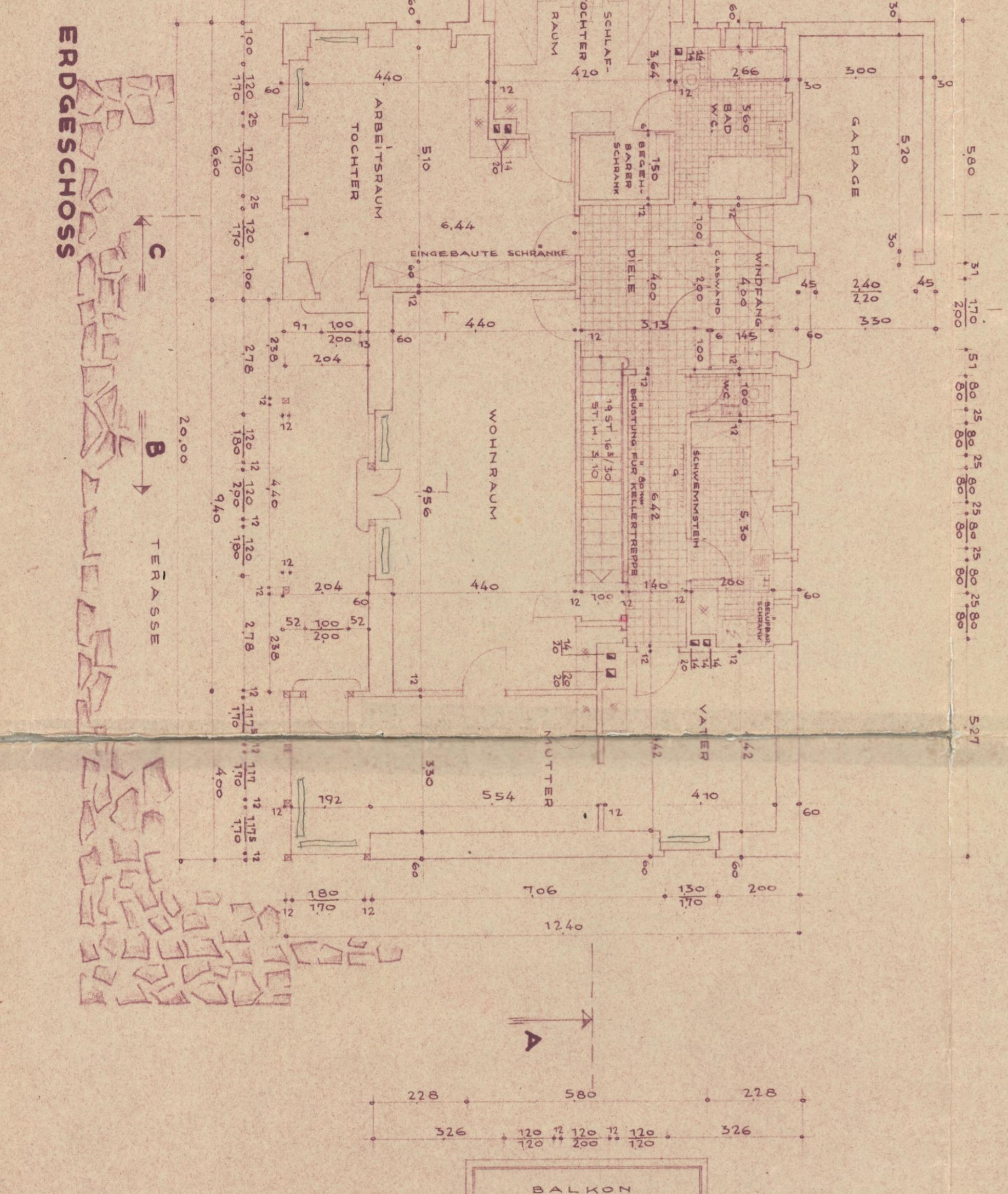
QUERSCHNITT C-C



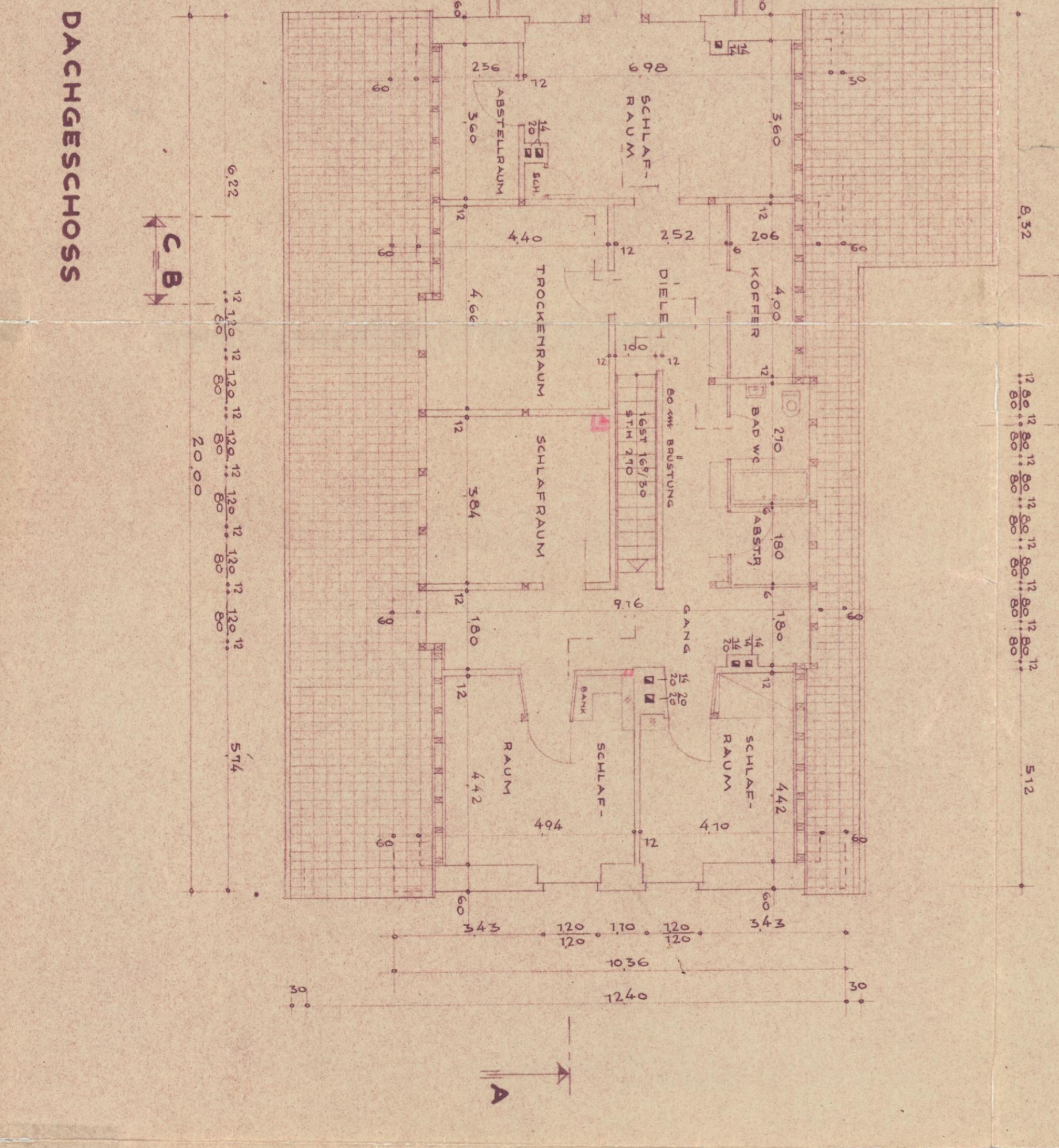
LAGEPLAN M. 1 : 1000



KELLERGESCHOSS



ERDGESCHOSS



DACHGESCHOSS

ZEICHENERKLÄRUNG

- MAUERWERK
- TONROHR
- GUSSROHR
- BETON
- HOLZ

ALLE INNENTÜREN SIND NACH MÖGLICHKEIT AUF MASSE VON 100 x 200 MM ZU BRINGEN
SÄMTLICHE MASSE SIND SCHREINERMASS!

OBERHAUSEN RHL.D., DEN 25. APRIL 1950
DIE BAUHERIN, DIE ARCHITECTIN B.-D.-A.

R. Smol-Winkel

DR. ING. RUTH WITZENDORF
GENERICHERSCHAFT
RIPPOLINGEN
RHEINLAND-PFALZ